

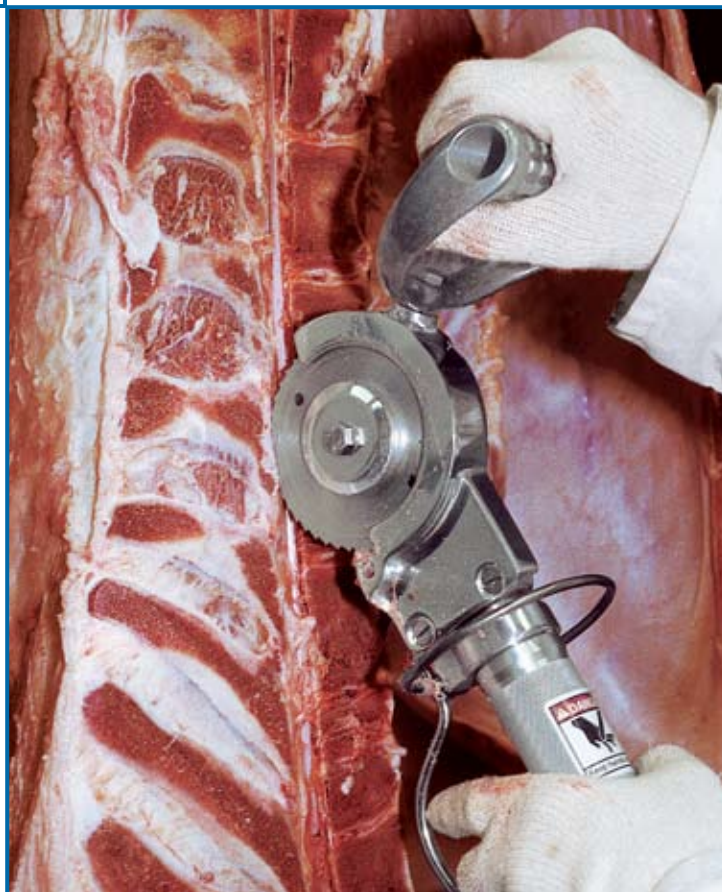
CIRCULAR AIR SAW Model SPC 141



**The Jarvis Model SPC 141 -
pneumatically powered air saw.**

JARVIS

- The SPC 141 is ideally suited for opening up mis-split spinal cord cavities in beef.
- Lightweight and flexible - allows operators to work single handed, both hanging and on the table.
- More power - high efficiency air motor for more horsepower and lower operating costs.
- Heavy duty gears made to withstand all uses in the packing plant industry.
- Rear end exhaust.
- Constructed from corrosion resistant materials for optimum hygiene.
- Fast blade stop.
- Meets national and international requirements for hygiene and safety.



THE SPC SAWS - POWERFUL, LIGHTWEIGHT, FLEXIBLE

CIRCULAR BREAKING SAW

Model SPC 141

Specifications

Drive	Pneumatic	
Model SPC 141		
Motor Power	0.85 hp	630 W
Operating Pressure	90 psi	6.2 bar
Air Consumption	27.3 ft ³ / min	0.77 m ³ / min
Cut Speed	1775 rpm	
Control Handle		
Single Trigger	Pneumatic	
Blade Diameter	4.0 in	102 mm
Cutting Depth (maximum)	1.0 or 0.75 in	25 or 19 mm
Overall Length	16.5 in	419 mm
Weight	5.85 lbs	2.65 kg
Vibration	122 dB	1.26 m / sec ²
Noise (one meter from tool)	88 dB	

Equipment Selection and Accessories	Order Number
Model SPC 141	4001041
Air Hose length 16 ft / 5 m	3059018
Air Filter / Regulator / Lubricator	3022003
Blades	
4.0 in / 102 mm diameter blade - 46 teeth	1023170
4.0 in / 102 mm diameter blade - 90 teeth	1023004
4.0 in / 102 mm diameter optional spinal cord blade	1023467
Complete Assembly Tool Kit	8039162
Balancer	4042033



Products for the meat and poultry industry

Jarvis Products Corporation · 33 Anderson Road · Middletown, CT 06457-4926 · United States of America
 Telephone (860) 347-7271 · Fax (860) 347-9905 · sales@jarvisproducts.com · www.jarvisproducts.com