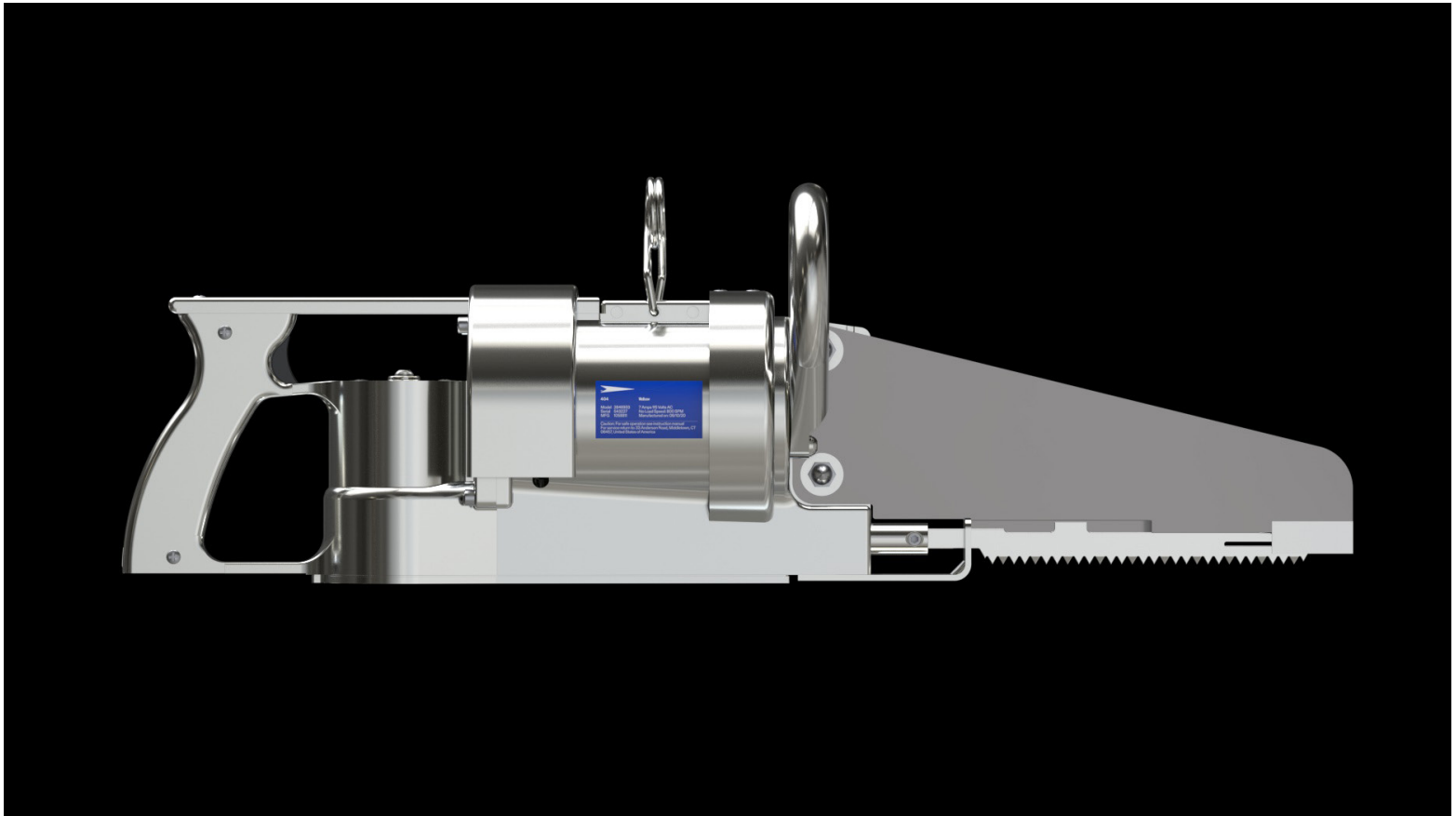


444 & 464

Reciprocating Breaking Saw
Electric/Pneumatic

Product Brochure



JARVIS®

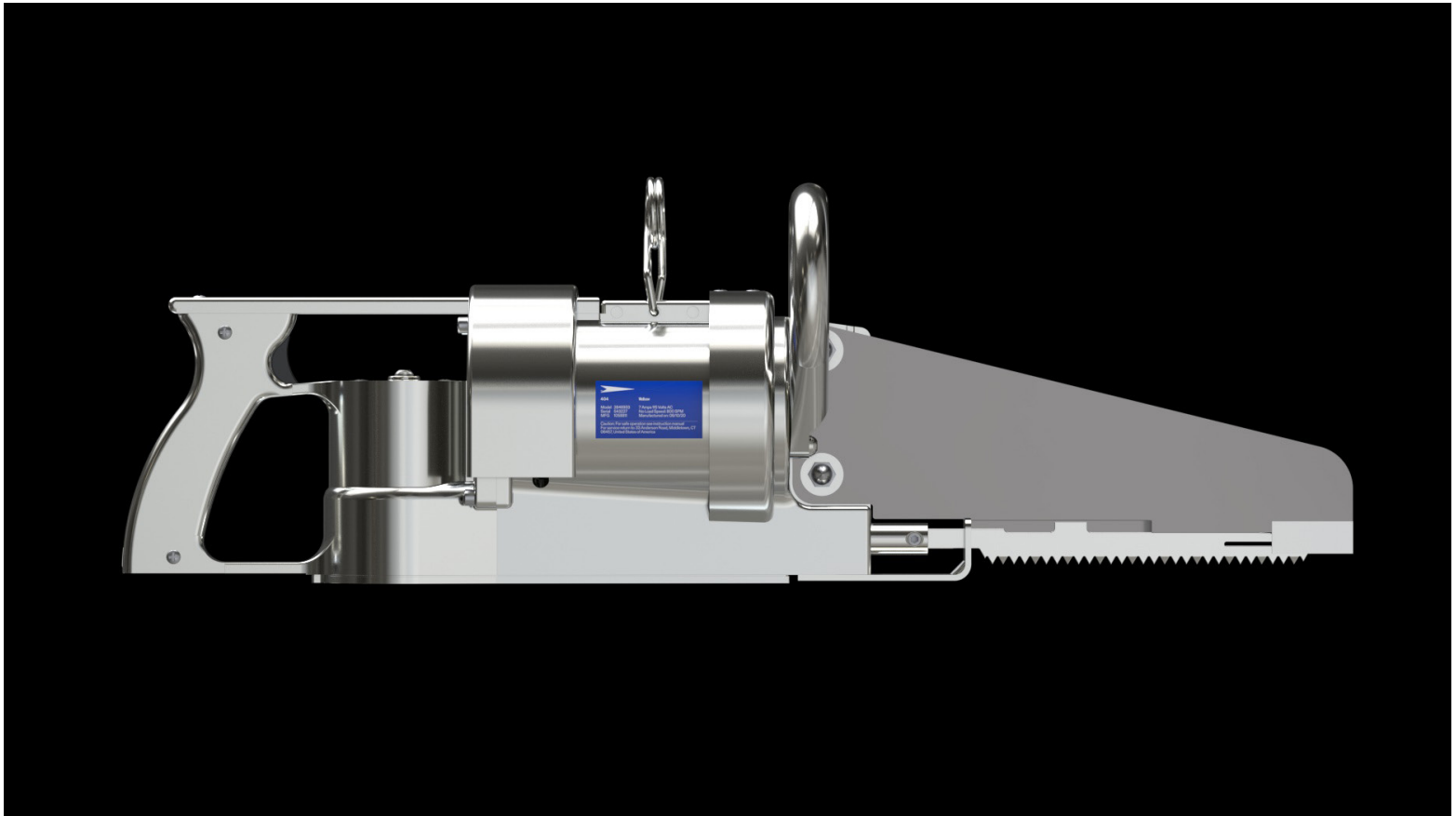
Jarvis Products Corporation
33 Anderson Road
Middletown, CT 06457
United States of America

www.jarvisproducts.com
sales@jarvisproducts.com
T 860-347-7271
F 860-347-6978

444 & 464

Reciprocating Breaking Saw
Electric/Pneumatic

Product Brochure



JARVIS®

Jarvis Products Corporation
33 Anderson Road
Middletown, CT 06457
United States of America

www.jarvisproducts.com
sales@jarvisproducts.com
T 860-347-7271
F 860-347-6978

Descriptions

- The Model 444 (electric) and 464 (pneumatic) are lightweight saws suitable for production breaking and general purpose use in locker plants.
- Lightweight - the Model 444 is 10.5 kg (23 lbs) and the Model 464 is 9.1 kg (20 lbs) for ultimate flexibility.
- High speed for good cutting performance.
- Common applications include:
Beef: cutting forequarters, shank bones, primal cuts, aitch bones, brisket opening and splitting.

Specifications

444

Drive	Electric	
Motor Power	746 W	2 hp
Voltage / Amp	115 V / 7A, 1 phase, 50 / 60 Hz	
Full Load Amperes	at 115 V	15 A
	at 230 V	7.5 A
	at 42 V	41 A
Blade Speed	6,300 cuts / min	
Stroke	38 mm	1.5 in
Control Handle	Single Trigger	Electric
Blade Lengths	203 mm	8 in
	406 mm	16 in
Overall Length (with 400 mm / 16 in blade)	965 mm	38 in
Weight	10.5 kg	23 lbs

Specifications

464

Drive	Pneumatic	
Motor Power	1305 W	1.75 hp
Operating Pressure	6.8 bar	100 psi
Air Consumption	1.5 m ³ / min	53 ft ³ / min
Blade Speed	6,000 cuts / min	
Stroke	38 mm	1.5 in
Control Handle	Single Trigger	Pneumatic
Blade Lengths	203 mm	8 in
	406 mm	16 in
Overall Length (with 406 mm / 16 in blade)	787 mm	37 in
Weight	3.7 kg	20 lbs

Equipment Selection and Accessories

444

			Order Number
8 in / 200 mm blade (1023122)	end cutting support (1058076)	115 V, 1 ph, 50 / 60 Hz	4005254
8 in / 200 mm blade (1023122)	end cutting support (1058076)	230 V, 1 ph, 50 / 60 Hz	4005255
8 in / 200 mm blade (1023123)	heavy duty support (1058073)	115 V, 1 ph, 50 / 60 Hz	4005250
8 in / 200 mm blade (1023123)	heavy duty support (1058073)	230 V, 1 ph, 50 / 60 Hz	4005251
16 in / 400 mm blade (1023121)	end cutting support (1058077)	115 V, 1 ph, 50 / 60 Hz	4005256
16 in / 400 mm blade (1023121)	end cutting support (1058077)	230 V, 1 ph, 50 / 60 Hz	4005257
16 in / 400 mm blade (1023124)	heavy duty support (1058072)	115 V, 1 ph, 50 / 60 Hz	4005252
16 in / 400 mm blade (1023124)	heavy duty support (1058072)	230 V, 1 ph, 50 / 60 Hz	4005253

464

8 in / 200 mm blade (1023122)	end cutting support (1058076)	4005262
8 in / 200 mm blade (1023123)	heavy duty support (1058073)	4005260
16 in / 400 mm blade (1023121)	end cutting support (1058077)	4005263
16 in / 400 mm blade (1023124)	heavy duty support (1058072)	4005261

Hose for Model 464 Wellsaw		1059015
Air Filter / Regulator / Lubricator for Model 464 Wellsaw		3022003
Balancer	Model 444 Wellsaw	4042037
	Model 464 Wellsaw	4042045